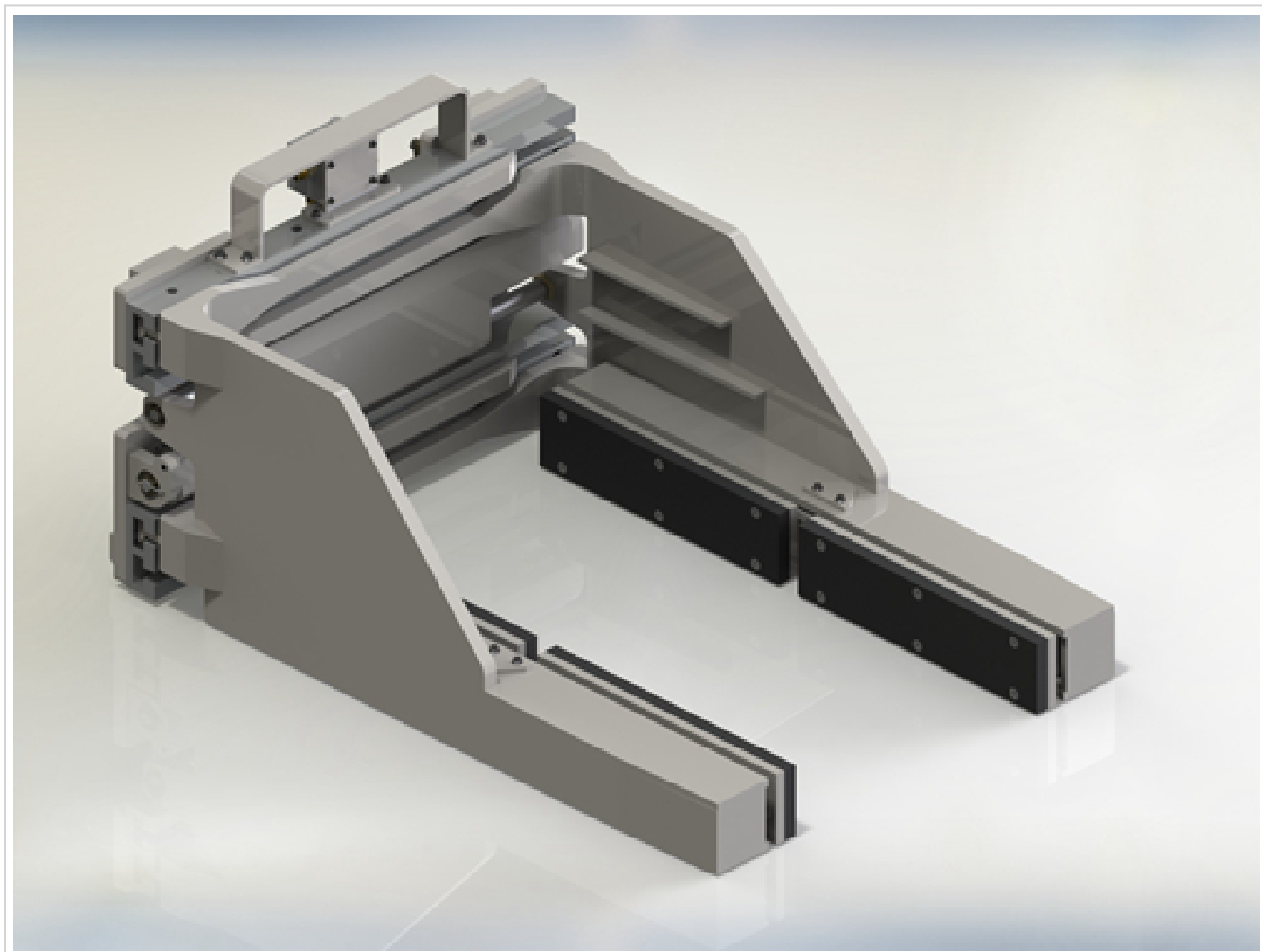


# Brick-Block Clamp FEM II

[Click aici sa vezi produsul](#)





| Capacitate@Incarcare | Model       | Clasa | Deschidere (mm) | Lungime brat(L) (mm) | Inaltime brat (H) (mm) | Grosime brat (T) (mm) | Latime rama (T) (mm) | CGV(mm) | CGH(mm) | ET(mm) | Greutatea de serviciu(kg) |
|----------------------|-------------|-------|-----------------|----------------------|------------------------|-----------------------|----------------------|---------|---------|--------|---------------------------|
| 2500@500             | BLC-25M-A00 | 2     | 330-1650        | 1000                 | 240                    | 190                   | 1100                 | 220     | 216     | 145    | 790                       |
| 2500@500             | BLC-25M-A10 | 2     | 330-1650        | 1000                 | 128                    | 190                   | 1100                 | 220     | 216     | 145    | 690                       |
| 2500@500             | BLC-25M-A01 | 2     | 330-1650        | 1100                 | 240                    | 190                   | 1100                 | 220     | 220     | 145    | 800                       |
| 2500@500             | BLC-25M-A11 | 2     | 330-1650        | 1100                 | 128                    | 190                   | 1100                 | 220     | 220     | 145    | 700                       |





SC Stivuitoare-Lize SRL

Telefon: +40 744 891 111

Email: [office@stivuitoarenoi.ro](mailto:office@stivuitoarenoi.ro)

Website: <https://stivuitoarenoi.ro/>

Comuna Corunca, Str. Principala, nr. 412-413, judet Mures, Romania