

Mini excavator CDM6010

480000 € fara TVA

[Click aici sa vezi produsul](#)

















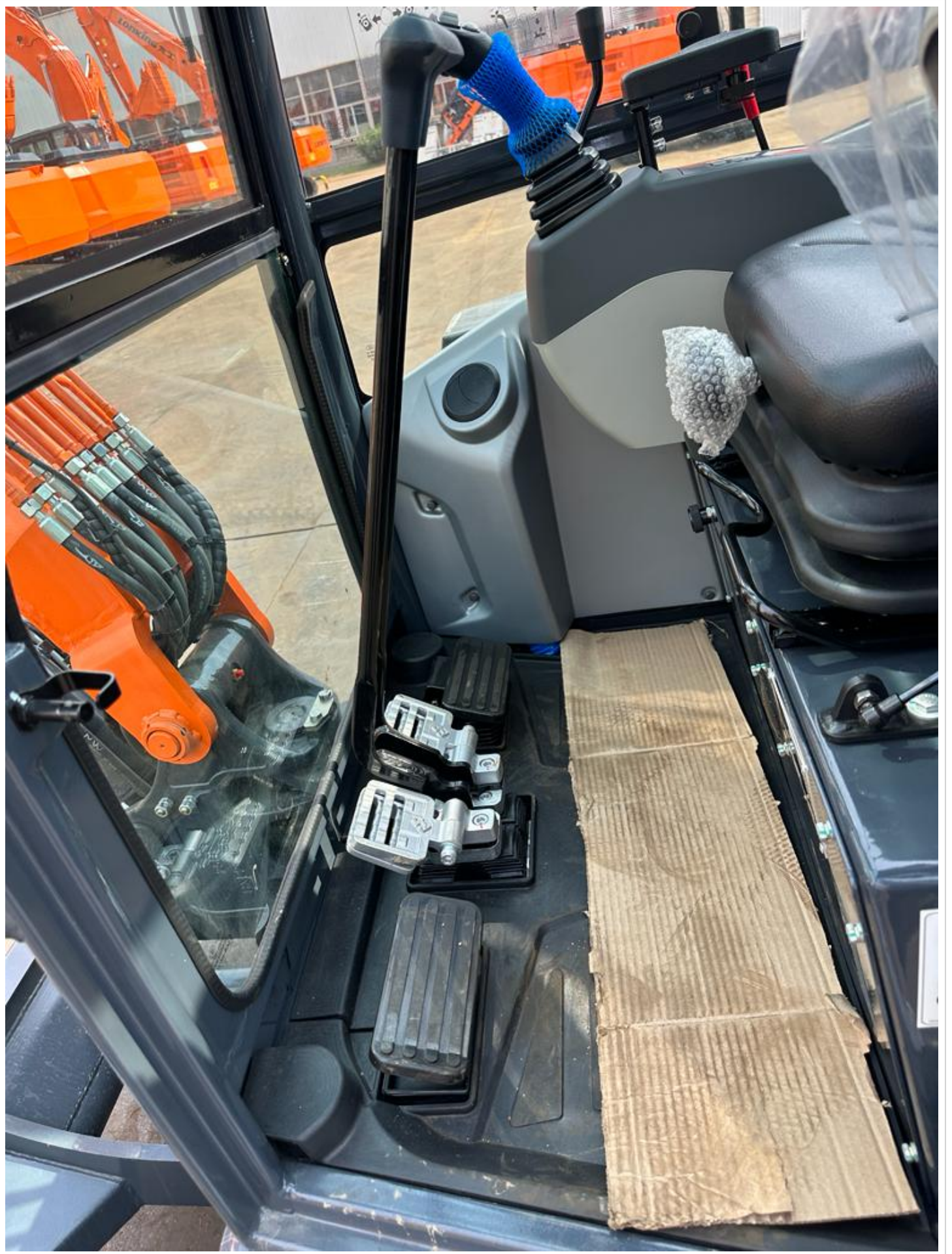








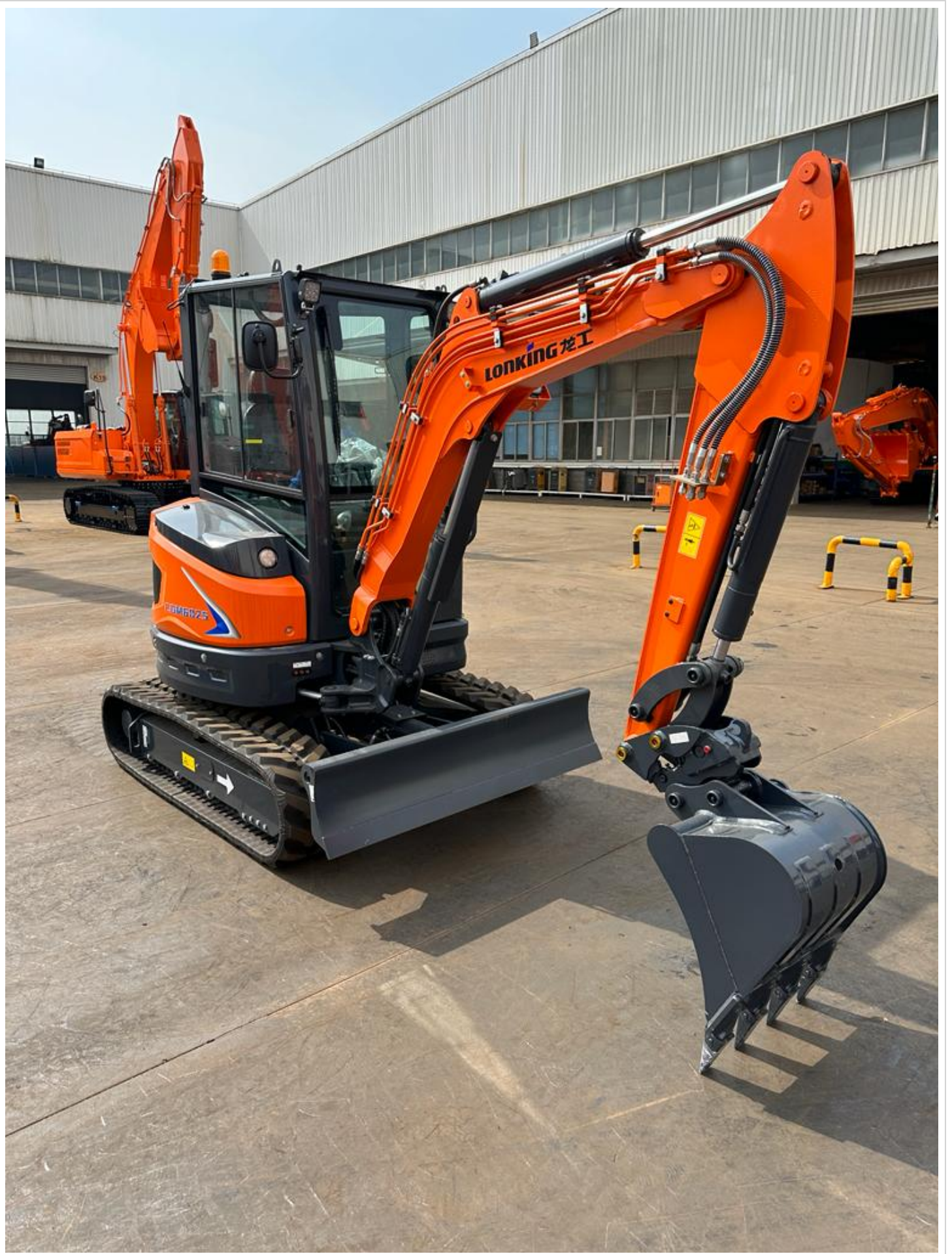


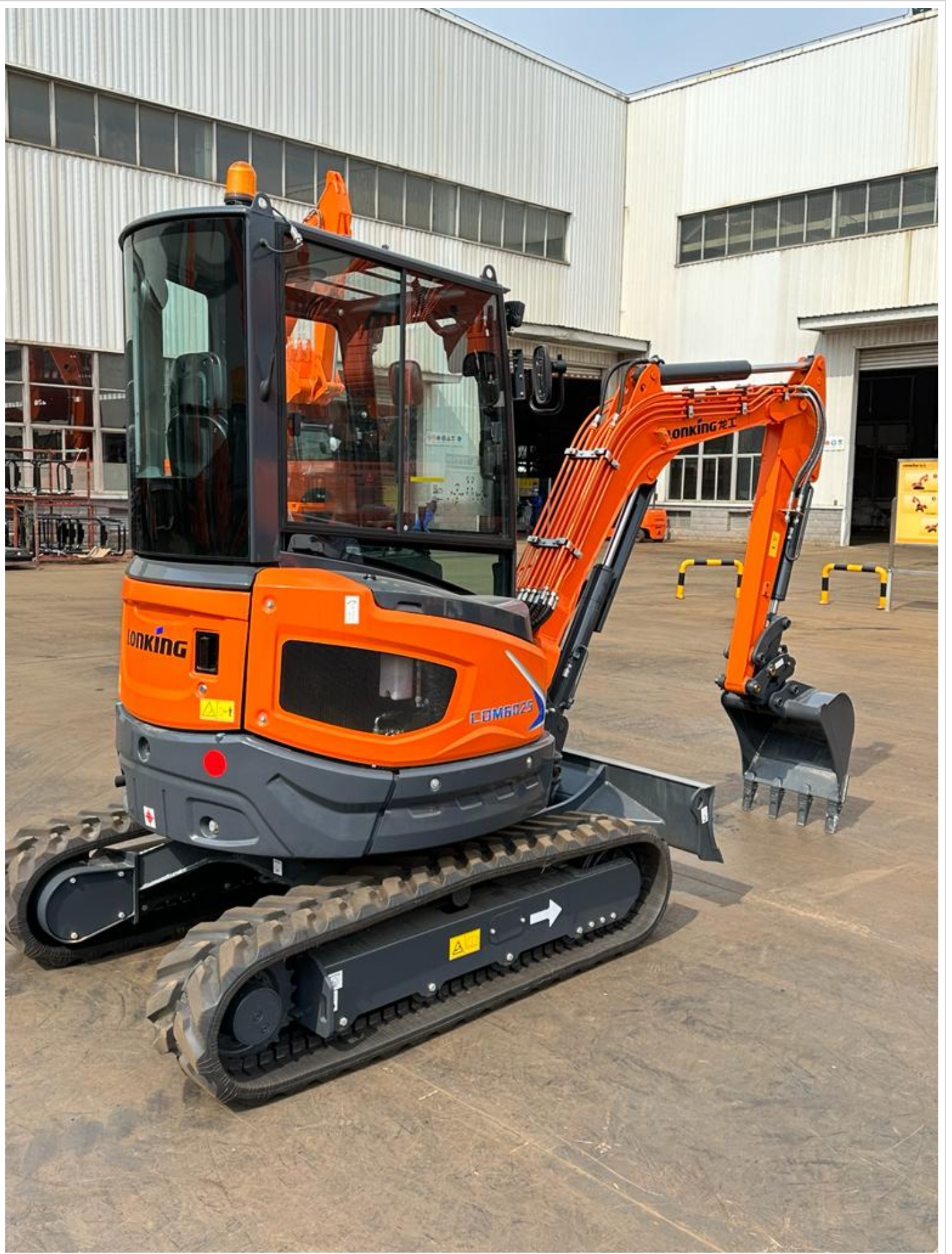




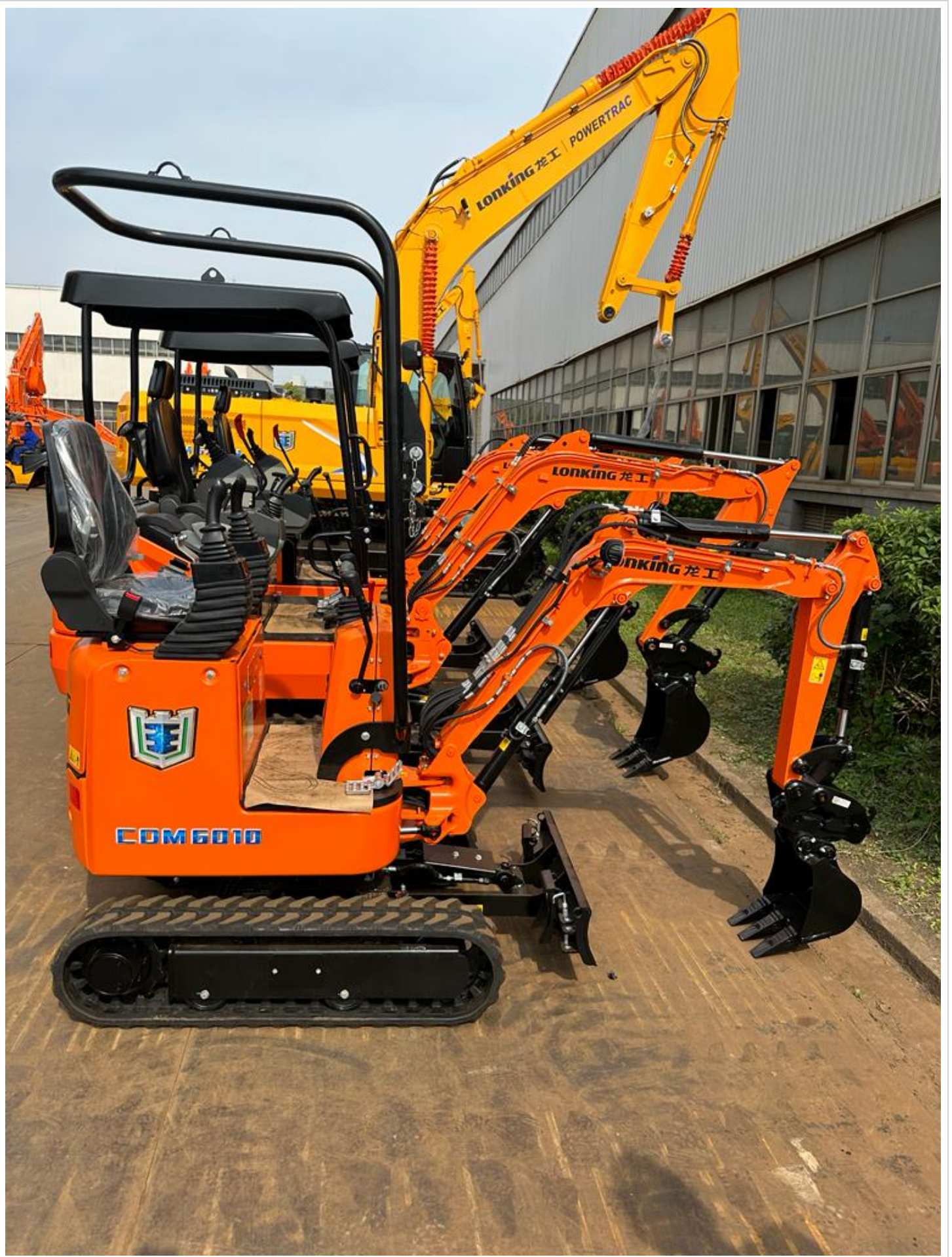


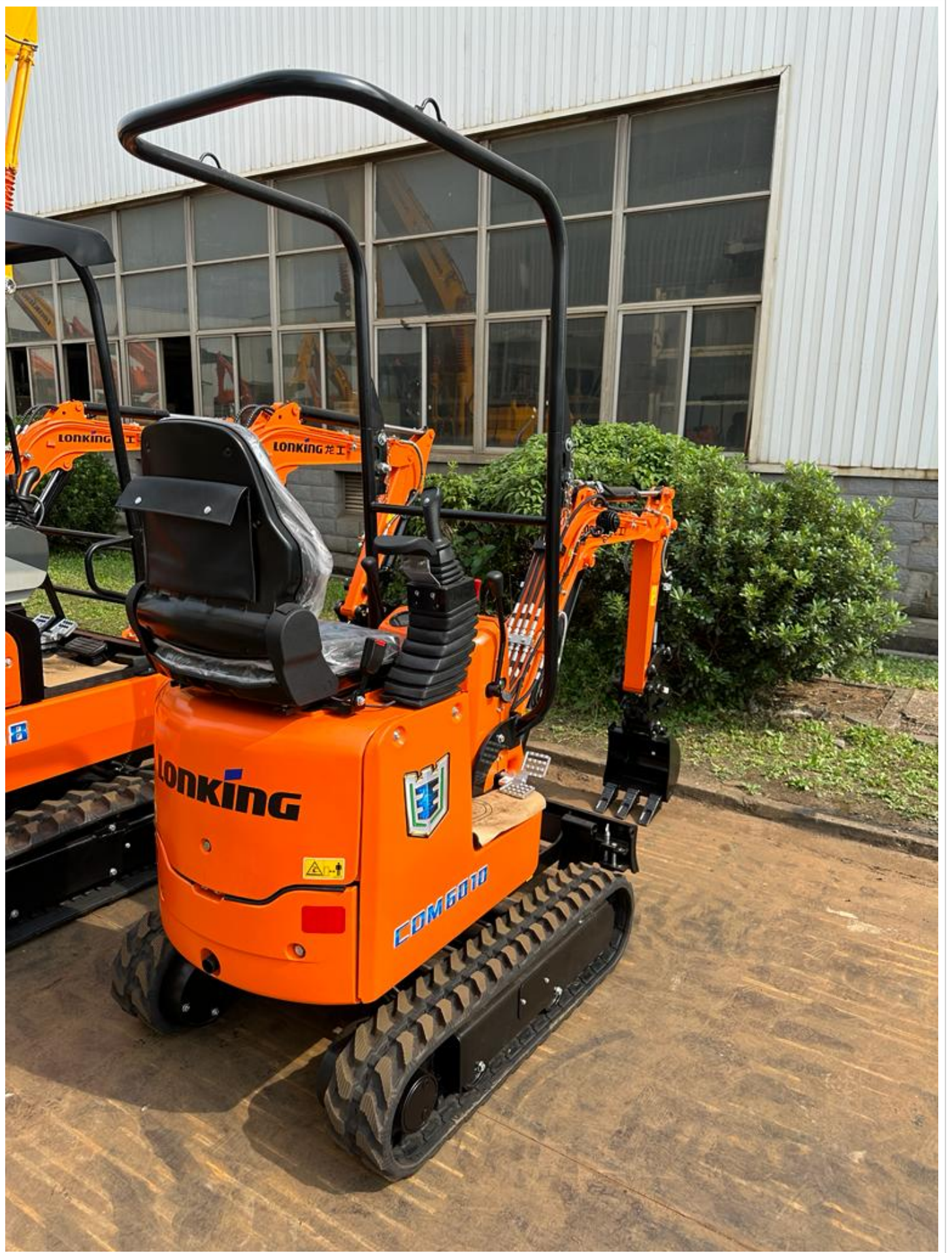




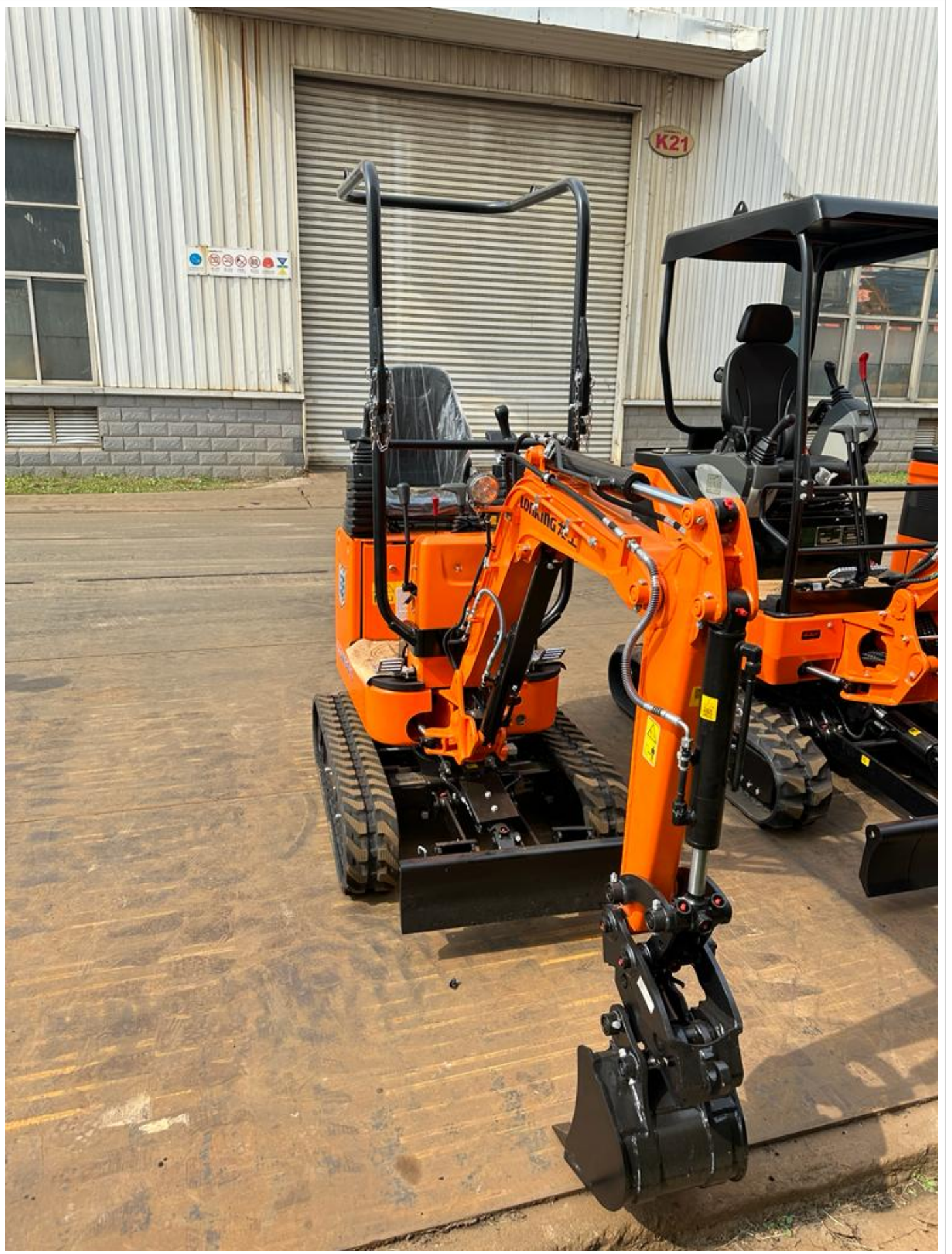
















豁免信息标签

达制: GB20891-2014 型式核准豁免要求

生产日期: 2023.10

豁免用途: 出口

机械类别: 挖掘机械

型号: CDM6010

名称: 履带式液压挖掘机

商标: LONKING 龙工

机械生产企业名称: 龙工(上海)挖掘机制造有限公司

机械编号: >LSW008E1EP0029928<

发动机型号: ZIN70-fSI

发动机编号: G1243

发动机生产: YANMAR POWER TECHNOLOGY CO., LTD

CE

LONKING (SHANGHAI) EXCAVATOR CO., LTD
196 Xinrun Road, Xinqiao, Songjiang
Industrial, Shanghai

Type	Hydraulic Track Excavator	Model	CDM6010
Weight	1010 Kg	Engine Power	7.5 Kw
PIN Coding	>LSW008E1EP0029928<		
Year of construction	2023		

LONKING

CAUTION

Precautions for Safe Operation

- To guarantee safe operation, please read and fully understand the Operation Manual prior to operation of this machine and correctly operate the machine as required. If you need to change relevant data, please contact the agent.
- Please carry out operation, repair and maintenance of the machine as per the instructions given in the Operation Manual and warning signs.
- Prior to operating the machine, please confirm whether there is any body underneath the machine or within the working range, and ring the horn to warn the surrounding persons to take care. Prior to starting of the engine, please sit in the driver's seat and fasten the seat belt.
- When going down a slope and moving up and down the slope, the machine should travel at low speed to ensure stability.
- While operating the operational accessories, do not bump against the machine body.
- When the engine is working, set the key on "OFF" position to keep the electric power and hydraulic system working.
- Before leaving the cab, be sure to rest the bucket on the floor, turn off the engine, lock the safety locking lever and draw out the key.
- When the machine is in a slope, be sure to rest the bucket on the floor and put scotch blocks at the back.
- When the machine body is propped up with boom and arm, it is forbidden to access the space beneath the machine body and the operational accessories.
- It is forbidden to touch and adjust the machine with the aid of loading power of the operational accessories so as to avoid damage.
- When transporting, unloading of the machine may result in displacement, so be sure to secure the machine with winch ropes and winch chains.

Lubrication diagram

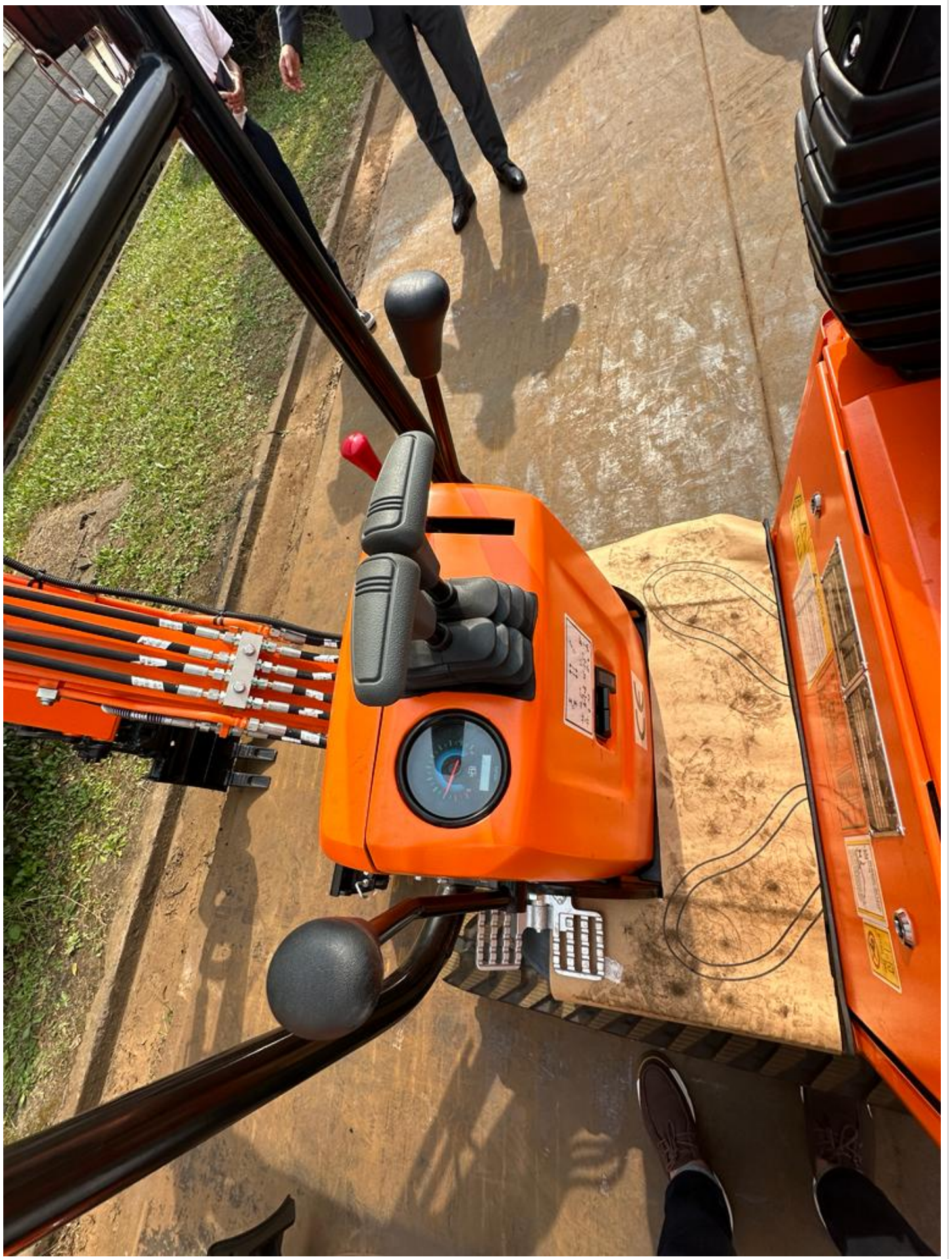
Item	Lubricator part	Quantity	Lubricant
1	Bucket pin joint	2	
2	Connecting bar pin	2	
3	Bucket cylinder pin	1	
4	Upper pin	1	
5	Upper cylinder pin	2	2# extreme pressure lithium-based grease
6	LB cylinder pin	2	
7	LB pin	2	
8	Swing base and roller pin	4	
9	Swing thrust roller pin	6	
10	Swing pin	1	
11	Swing pin	1	Hydraulic oil
12	Swing pin	1	Grease oil
13	Swing pin	1	Grease oil
14	Swing pin	1	Grease oil
15	Swing pin	1	Grease oil
16	Swing pin	1	Grease oil
17	Swing pin	1	Grease oil

1. Lines indicate the maintenance, filling and replacing schedules/hours.
2. Maintenance Repair Replace for the first time

Hydraulic Oil Level

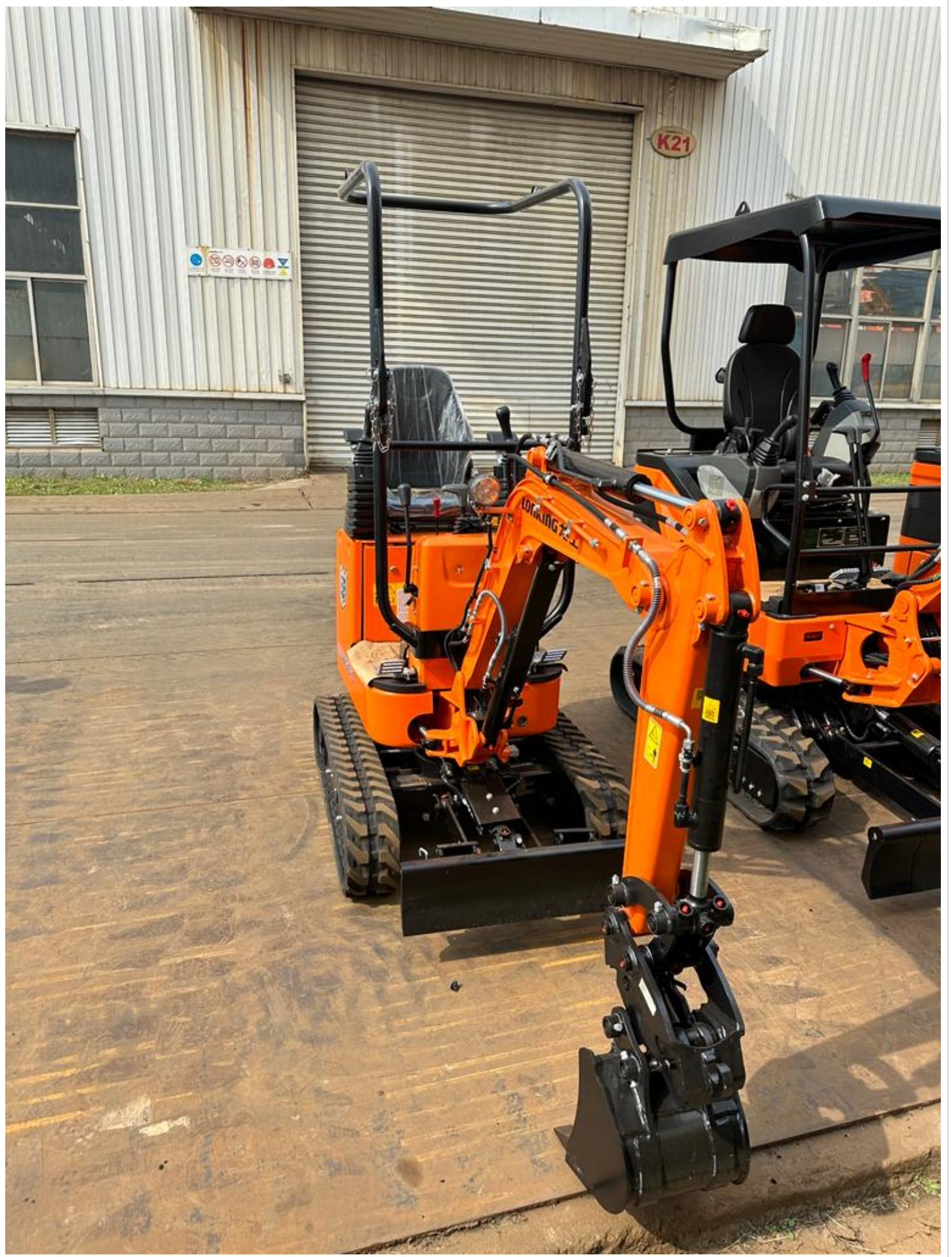
Be sure to check the hydraulic oil level every day

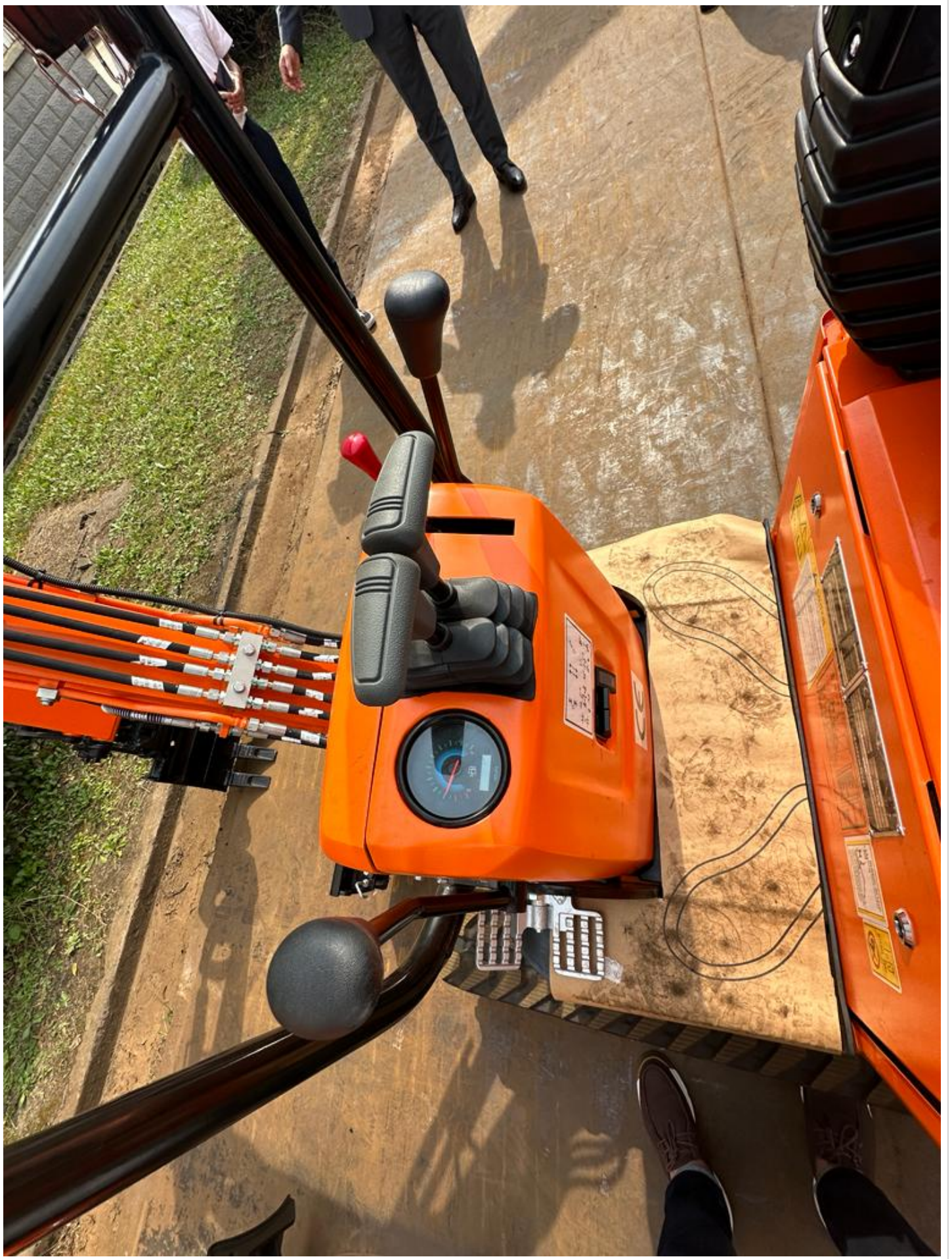
Place work equipments and lower blade into the position shown as the above figure. The oil level range should be located in the middle of oil level gauge by 10mm high and low.

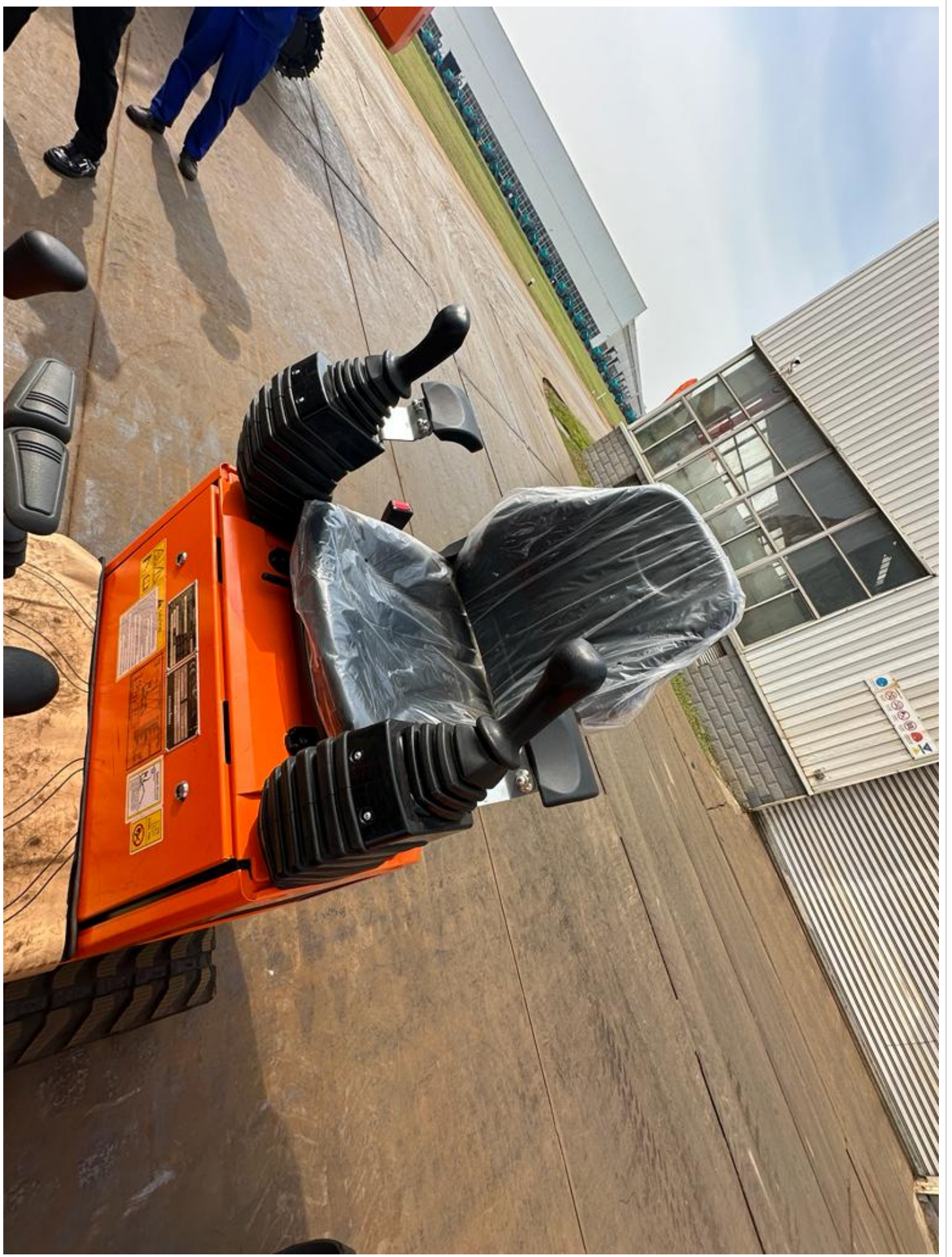








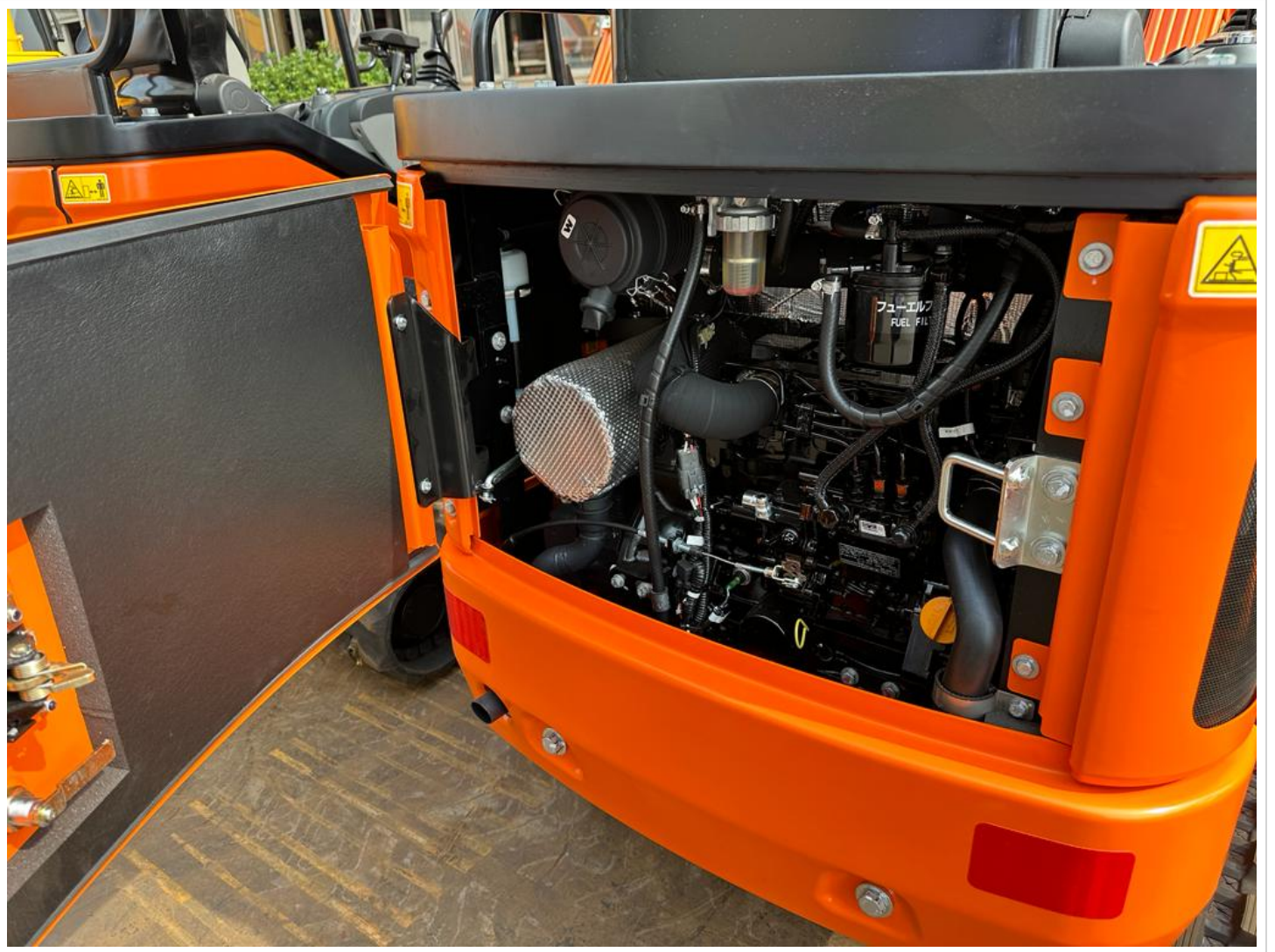


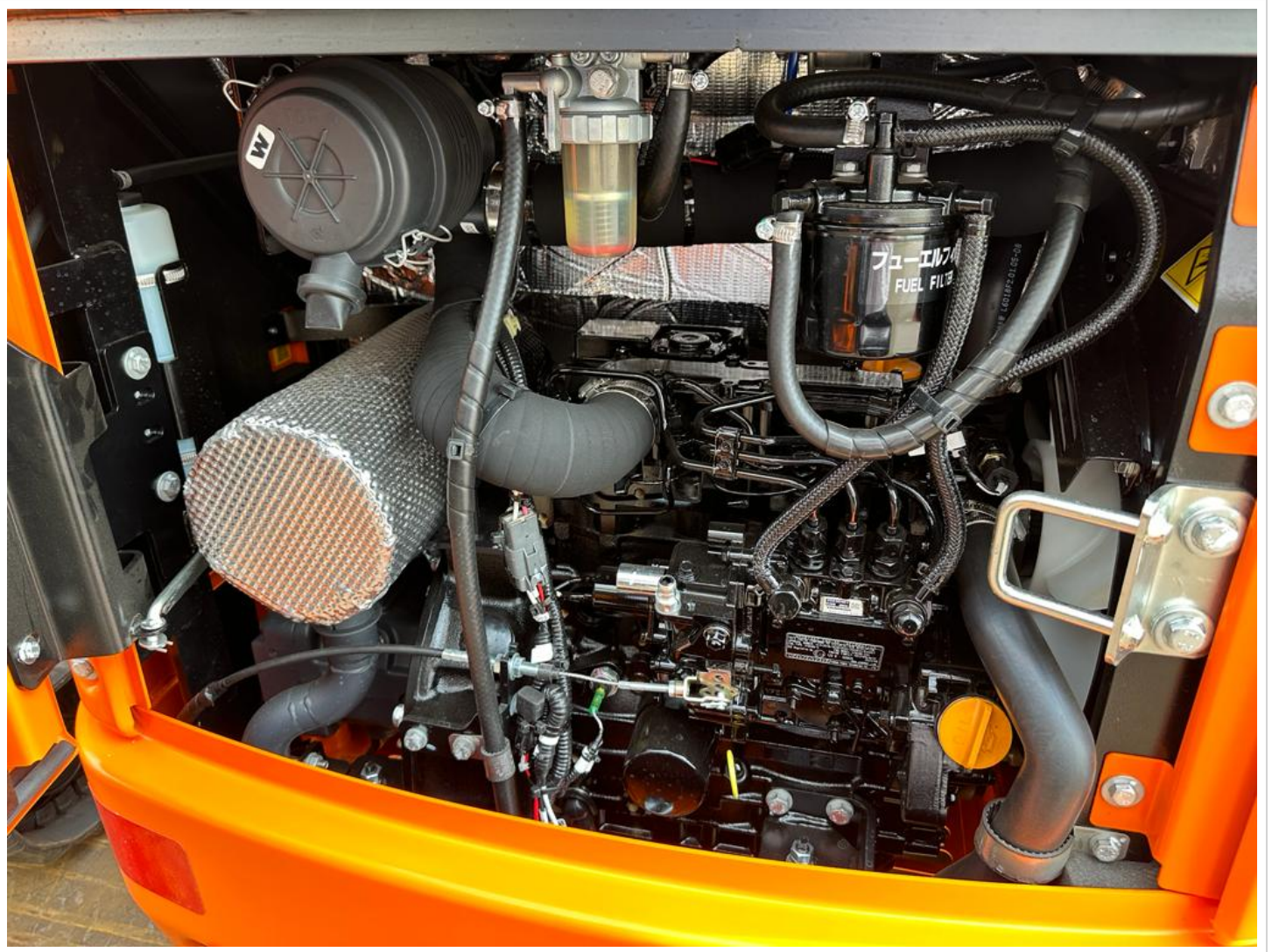


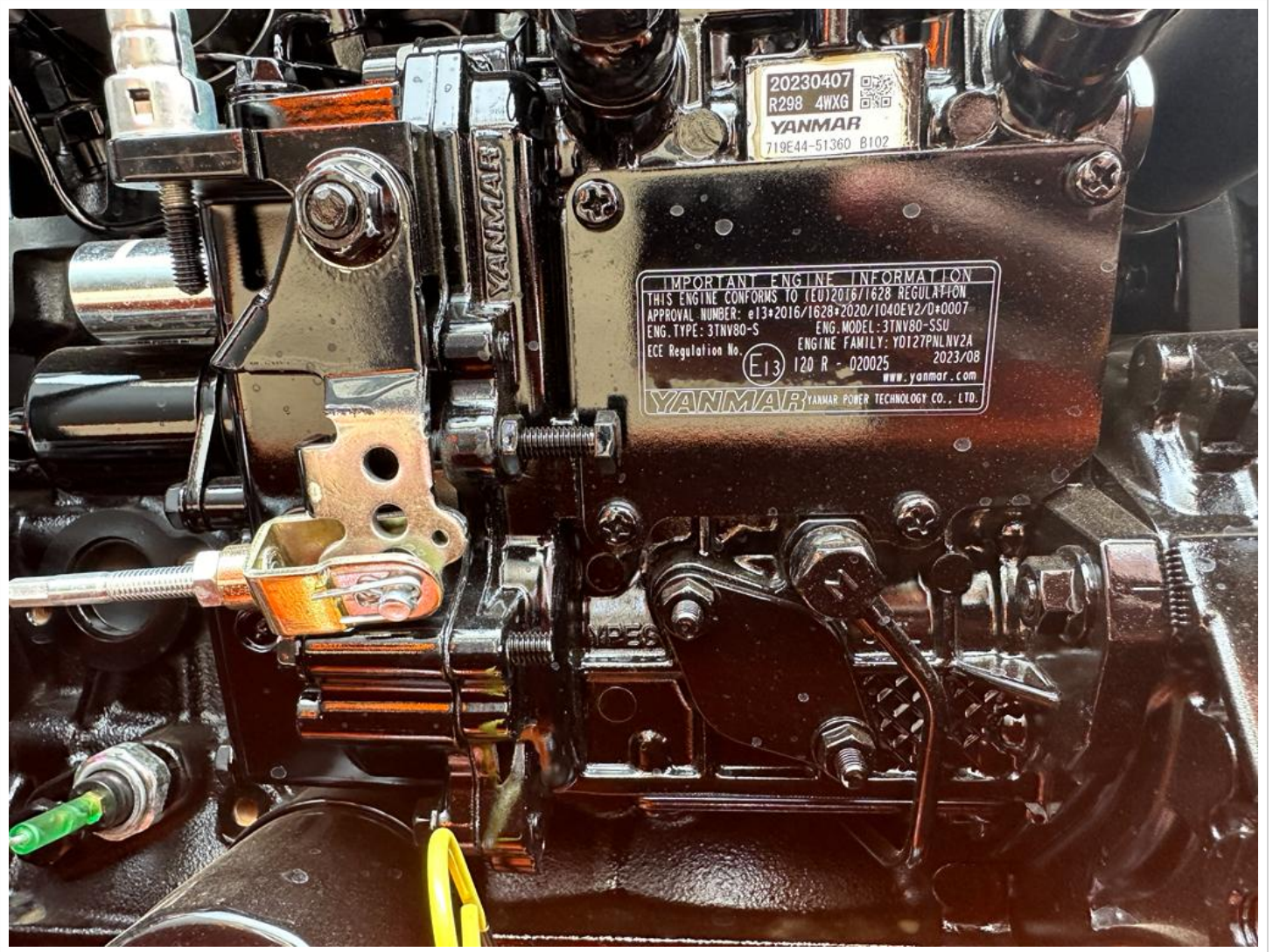












20230407
R298 4WXG
YANMAR
719E44-51360 8102

IMPORTANT ENGINE INFORMATION
THIS ENGINE CONFORMS TO (EU)2016/1628 REGULATION
APPROVAL NUMBER: e13+2016/1628+2020/1040EV2/D+0007
ENG. TYPE: 3TNV80-S ENG. MODEL: 3TNV80-SSU
ECE Regulation No. ENGINE FAMILY: YD127PNLV2A
E13 120 R - 020025 2023/08
www.yanmar.com
YANMAR YANMAR POWER TECHNOLOGY CO., LTD.



De baza	Greutate de operare	1000 kg
	Lungimea bratului	1830 mm
	Lungimea bratului	950 mm
	Galeata standard	0,022 m ³
	Viteza de deplasare max	2,0/3,6 km/h
	Viteza maxima de balansare	8,5 rpm
	Abilitatea de nota	35°(70%)
	Presiunea la sol	25 kPa
	Max.Forta de tractiune	15,6 kN
	Model de motor	D782
Motor	Putere nominala	7,2 kW/2300 rpm
	Cuplul maxim	44,5/1800 Nm/rpm
	Deplasare	0,778 l
	Rezervor de combustibil	13 L
	Debit max.(total)	7,2x2+4,5 L/min
Hidraulic	Max.Presiune de lucru	21,6 MPa
	Presiune max.pilot	3,9 Mpa
	Forta de sapare max.brat	8,8 kN(ISO)
	Forta de sapare max	15,2 kN(ISO)
	Rezervor de ulei hidraulic	18 L
	Latimea benzii	230 mm
?asiu	Numarul de pantofi de urmarire	37 (pe fiecare parte)
	Numarul rotelor de transport	0 (pe fiecare parte)
	Numarul rotelor de senile	3 (pe fiecare parte)
Electric	Volajul sistemului	12 V
	Capacitatea bateriei	12 V, 45 Ah



SC Stivuitoare-Lize SRL

Telefon: +40 744 891 111

Email: office@stivuitoarenoi.ro

Website: <https://stivuitoarenoi.ro/>

Comuna Corunca, Str. Principala, nr. 412-413, judet Mures, Romania